



MONTHLY MEMBERSHIP PROGRESS REPORT

District 18 I

Results as of: 3/31/2015

GMT: CARL HARRELL

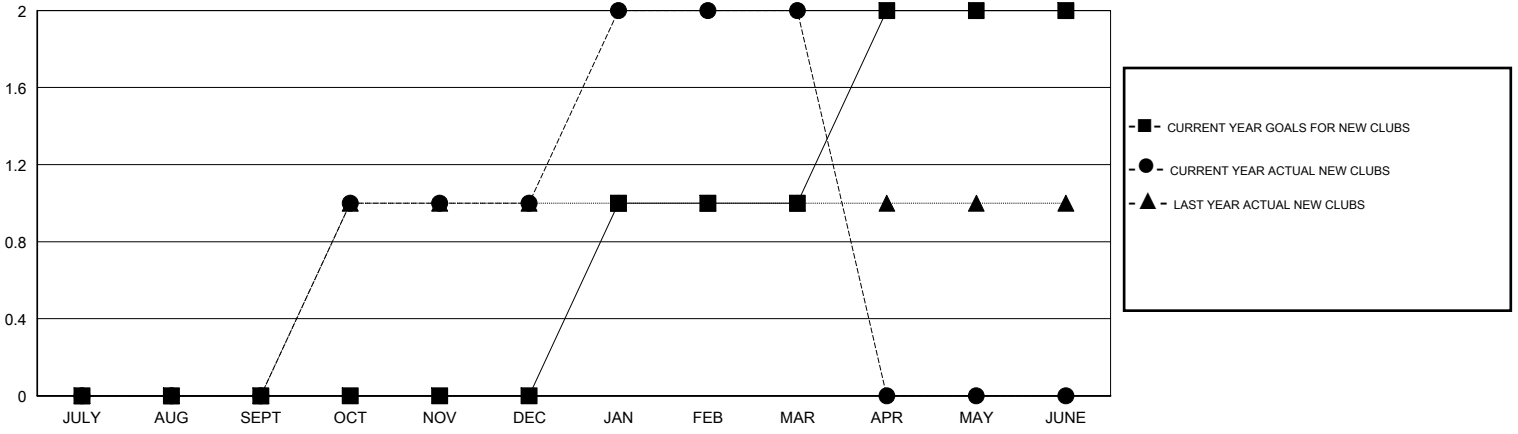
LOCATION GEORGIA

GMT CA 1

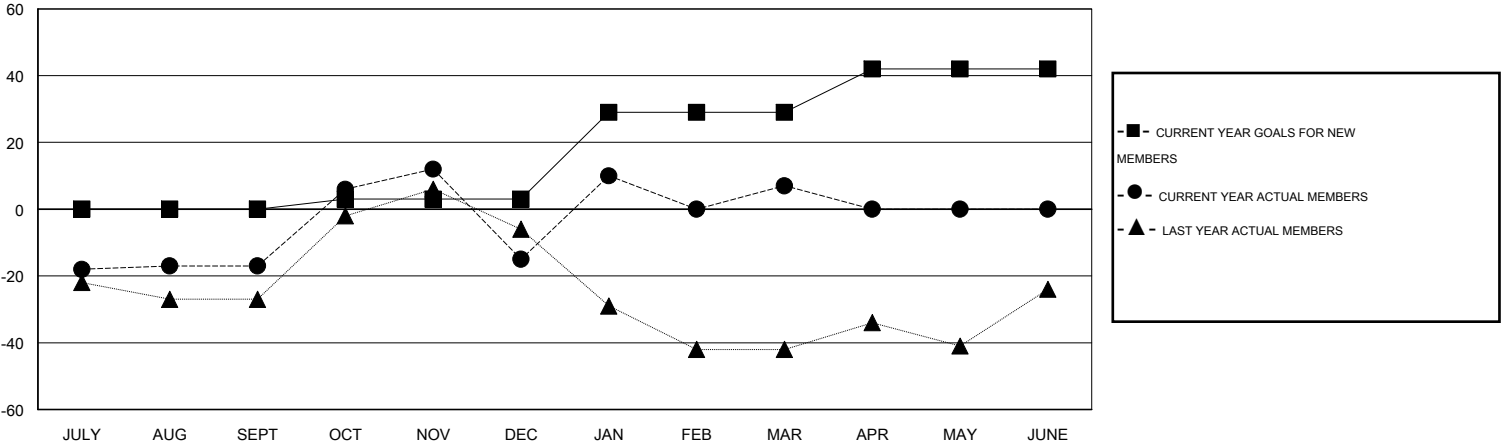
Clubs				
RESULTS FOR 2014-2015				
QUARTER	NEW CLUB GOAL	NEW CLUBS	DROPPED CLUBS	NET GAIN/LOSS
JULY/AUG/SEPT	0	0	0	0
OCT/NOV/DEC	0	1	0	1
JAN/FEB/MAR	1	1	0	1
APR/MAY/JUNE	1	0	0	0

Members				
RESULTS FOR 2014-2015				
QUARTER	NEW MEMBER GOAL	CHARTER AND NEW MEMBERS ADDED	DROPPED MEMBERS	NET GAIN/LOSS
JULY/AUG/SEPT	0	51	68	-17
OCT/NOV/DEC	3	58	56	2
JAN/FEB/MAR	26	79	57	22
APR/MAY/JUNE	13	0	0	0

GOALS AND ACTUAL NEW CLUBS CUMULATIVE



GOALS AND ACTUAL MEMBERS CUMULATIVE



DROPPED CLUBS: 0	
<u>DROPPED MEMBERS</u>	
DECEASED	20
CLUB CANCELLED	0
OTHER	161
TOTAL	181

39 CLUBS OF 59 ADDED 1 OR MORE NEW MEMBERS

<u>GENDER DISTRIBUTION</u>	
MALE	939 (64.94%)
FEMALE	507 (35.06%)

[CLICK HERE FOR HEALTH ASSESSMENT DATA](#)

FAMILY UNIT MEMBERS	323
HEAD OF HOUSEHOLD	159
NON-HEAD OF HOUSEHOLD	164